

Global Index Trends

Index	Levels	Value	%Change
SGX NIFTY*	5580.00	-13.50	-0.35
DOW JONES	12949.90	45.79	0.35
NASDAQ	2951.78	-8.07	-0.27
S&P 500	1361.23	3.19	0.23
FTSE 100	5945.25	40.18	0.68
NIKKEI 225*	9485.44	0.35	0.00
Hang Seng*	21371.20	-53.60	-0.25

*(Feb 21, 2012)

Source: Bloomberg

Market Trend

Time Frame	Trend
Daily	Bullish
Weekly	Bullish
Monthly	Bullish

Institutional Activity

Category	Segment	Net Value*
FII's	CM	536.49
DII's	CM	-223.07

Source: NSE India

(* Rs in Cr.)

Commodities Futures Trends

	Value(\$)	%Change
Gold	1736.20	0.60
Silver	33.54	-0.54
Crude Oil	104.78	1.49

Source: Bloomberg

Nifty: Top Gainers & Losers

Gainers		Losers	
BHEL	6.48	HEROMOTOCO	-3.93
TATAPOWER	4.39	SESAGOA	-3.66
AXISBANK	4.35	MARUTI	-2.57
SIEMENS	3.95	RELINFRA	-2.13
M&M	3.56	HINDALCO	-2.01

Source: NSE India

Intra-day Recommendations

Scrip Code	Act	Entry	SL	Tgt
M&M	L	Above750	738	770
Bharti Airtel	S	Below 350	355	342
SBI	L	2405-2410	2390	2450
BHEL	L	298-300	294	310
ITC	L	Above 206	203	213

Note: - Act=Action; Entry=Entry; SL=Stop loss; Tgt=Target; L: Long; S: Short

Market View

U.S. markets were closed Monday for the Presidents Day holiday. While, Asian stock markets eked out modest gains in cautious trade on Tuesday morning as investors waited for European finance ministers in Brussels to approve a crucial second bailout for Greece.

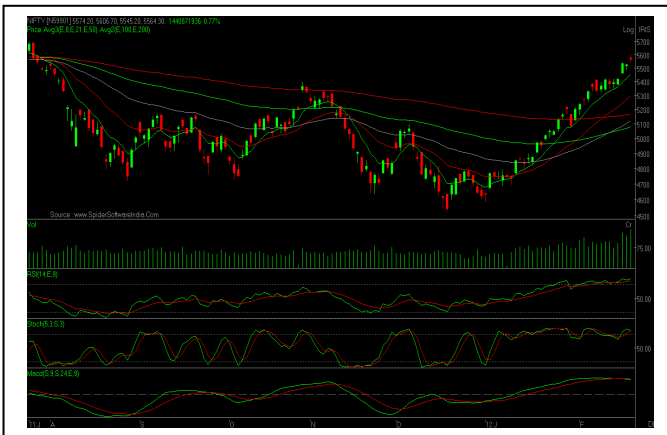
FOR THE DAY: Trade long in Nifty above 5550 levels else from 5520 levels with stop loss placed at 5500 levels for targets of 5600 and 5620 levels.

Market Buzz

- ✓ Hero Cycles has forayed into the premium bicycle market by launching a new product -- Red Dot -- priced at Rs 43,000.
- ✓ SpiceJet will take delivery of its 33rd aircraft, a Boeing 737, in the next few days, a company official said.
- ✓ Syndicate Bank planned to raise Rs 539 crore through issue of preferential shares to the government by March-end.
- ✓ JSL, has rejected Mesco Integrated Steel's proposal to jointly produce steel.
- ✓ Fertiliser production in India is estimated to rise by 9% to 37.6 million tonne in 2012-13 on better capacity utilisation.
- ✓ Government is planning to make it mandatory for ultra-mega power project (UMPP) developers to obtain equipment through global bidding process.
- ✓ Cashing in on Kingfisher's flight cancellations, major airlines have jacked up their fares on many busy air routes by 10-25% over the past few days.
- ✓ The Shipping Ministry proposes to undertake over 22 new projects worth about Rs 16,000 crore in 2012.
- ✓ India will start releasing annual inflation data based on the consumer price index (CPI) every month starting on Tuesday.

Devendra Gaur
Technical Analyst
devendra.gaur@karvy.com
 +91-9030062268

INDEX SNAPSHOT



Key Technical Levels and Moving Averages		
	Sensex	Nifty
Support 1	18200.00	5550.00
Support 2	18050.00	5520.00
Resistance 1	18350.00	5600.00
Resistance 2	18500.00	5620.00
8-day EMA	17966.19	5455.37
21-day EMA	17491.26	5296.44
50-day EMA	16966.77	5119.75
200-day EMA	17171.81	5163.48
13-week EMA	16984.14	5124.42

Note: - EMA = Exponential Moving Average

INDEX TECHNICAL VIEW

Nifty extended the rally for the sixth consecutive week with a weekly gain of more than 3%, reflecting the strong bullish sentiments. The rally had seen a sharp move above 5400 levels on account of short-covering across the board ahead of February expiry, which eventually boosted sentiments. Nifty tested intermediate high of 5600 levels and is likely to extend the rally until 5650 levels before witnessing any sort of correction. In addition, it had witnessed moving averages crossovers during previous week, confirming the positive trend. However, volume participation remained high indicates the constant closure of short positions around the higher levels. Accordingly, Nifty is likely to see fresh participation from lower levels and that will help to fuel the momentum in the trend.

Among technical indicators, both 14-day RSI and Stochastic still trading in over-bought region, indicating high cautiousness. However, with weekly MACD is heading north, suggesting broader market trend to remain positive.

Sectoral Indices	Last Closing	Change (Points)	Change (%)
BSE Auto	10319.20	(54.47)	(0.53)
BSE Bankex	12736.09	176.66	1.41
BSE CD	6647.43	268.36	4.21
BSE FMCG	4153.20	15.34	0.37
BSE Capital Goods	11106.78	165.04	1.51
BSE Healthcare	6375.30	(6.05)	(0.09)
BSE IT	6266.87	87.79	1.42
BSE Metal	12572.46	(13.25)	(0.11)
BSE Realty	2079.72	17.82	0.86
BSE Oil & Gas	8644.71	31.16	0.36
BSE PSU	7909.08	69.15	0.88
BSE Mid-cap	6544.56	(3.46)	(0.05)
BSE Small-cap	7116.49	(15.16)	(0.21)

Open Positional Recommendations

Scrip code	Issued Date	Action	CMP	Call Initiated	SL	Target	TF
JSWSTEEL	15/02/2012	BUY	855.45	867	840	895-900	2-3 DAYS
POWERGRID	16/02/2012	BUY	111.70	112	108	115-116	2-3 DAYS
KTKBANK	16/02/2012	BUY	109.40	108	104	113-114	2-3 DAYS
LITL	17/02/2012	BUY	22.60	23.50	22	25-26	BTST
COX&KINGS	17/02/2012	BUY	190.95	192	185	202-205	3-4 DAYS

Corporate Actions

Symbol	Series	Ex-Date	Record Date	Purpose
GAYAPROJ	EQ	22/02/2012	23/02/2012	RIGHTS 1:1 @ PREMIUM RS.110 PER SHARE
GESHIP	EQ	22/02/2012	23/02/2012	INTERIM DIVIDEND RS.3/- PER SHARE
NATCOPHARM	EQ	22/02/2012	23/02/2012	INTERIM DIVIDEND RS.3/- PER SHARE
OIL	EQ	22/02/2012	23/02/2012	2ND INTERIM DIVIDEND RS.10/- PER SHARE
PRECWIRE	EQ	23/02/2012	24/02/2012	INTERIM DIVIDEND RS.1.80 PER SHARE

Upcoming Results

KOUTONS	21/02/2012	RAIN COMMODITIES	21/02/2012	SHREE GANESH FORG	21/02/2012
---------	------------	------------------	------------	-------------------	------------

Pivot Table						
SCRIP	LTP	S2	S1	Pivot Point	R1	R2
SENSEX	18289.35	1827.16	18208.25	18315.66	18396.75	18504.16
NIFTY	5564.30	5510.57	5537.43	5572.07	5598.93	5633.57
ACC	1366.45	1314.68	1340.57	1362.68	1388.57	1410.68
AMBUJACEM	173.10	166.20	169.65	172.25	175.70	178.30
AXISBANK	1278.20	1216.07	1247.13	1271.07	1302.13	1326.07
BAJAJ-AUTO	1804.35	1752.48	1778.42	1801.68	1827.62	1850.88
BHARTIARTL	349.60	342.37	345.98	350.77	354.38	359.17
BHEL	303.55	265.62	284.58	304.97	323.93	344.32
BPCL	619.20	598.20	608.70	615.85	626.35	633.50
CAIRN	386.50	368.97	377.73	387.47	396.23	405.97
CIPLA	321.75	314.08	317.92	323.13	326.97	332.18
COALINDIA	323.80	316.80	320.30	326.40	329.90	336.00
DLF	253.90	247.53	250.72	255.28	258.47	263.03
DRREDDY	1634.95	1603.05	1619.00	1629.95	1645.90	1656.85
GAIL	380.70	367.77	374.23	382.17	388.63	396.57
GRASIM	2878.05	2781.15	2829.60	2862.15	2910.60	2943.15
HCLTECH	492.55	466.25	479.40	491.15	504.30	516.05
HDFC	716.80	703.87	710.33	718.27	724.73	732.67
HDFCBANK	528.30	514.23	521.27	527.13	534.17	540.03
HEROMOTOCO	2109.35	2020.95	2065.15	2137.55	2181.75	2254.15
HINDALCO	150.95	145.12	148.03	153.12	156.03	161.12
HINDUNILVR	385.10	377.97	381.53	384.77	388.33	391.57
ICICIBANK	981.60	963.00	972.30	984.80	994.10	1006.60
IDFC	148.00	136.93	142.47	151.73	157.27	166.53
INFY	2947.80	2864.13	2905.97	2941.98	2983.82	3019.83
ITC	205.45	202.02	203.73	204.82	206.53	207.62
JINDALSTEL	642.15	620.98	631.57	647.78	658.37	674.58
JPASSOCIAT	84.45	80.38	82.42	85.33	87.37	90.28
KOTAKBANK	576.10	566.77	571.43	577.72	582.38	588.67
LT	1447.15	1380.25	1413.70	1472.75	1506.20	1565.25
M&M	748.60	721.07	734.83	743.77	757.53	766.47
MARUTI	1321.55	1287.18	1304.37	1335.23	1352.42	1383.28
NTPC	187.90	181.93	184.92	187.83	190.82	193.73
ONGC	281.25	273.15	277.20	283.85	287.90	294.55
PNB	1076.50	1045.97	1061.23	1075.27	1090.53	1104.57
POWERGRID	111.70	109.57	110.63	112.07	113.13	114.57
RANBAXY	448.60	438.40	443.50	451.20	456.30	464.00
RCOM	104.10	100.33	102.22	104.93	106.82	109.53
RELIANCE	818.20	802.07	810.13	818.27	826.33	834.47
RELINFRA	617.40	571.77	594.58	624.12	646.93	676.47
RPOWER	126.15	117.85	122.00	127.75	131.90	137.65
SAIL	111.55	107.92	109.73	112.82	114.63	117.72
SBIN	2417.05	2327.32	2372.18	2421.87	2466.73	2516.42
SESAGOA	244.60	217.53	231.07	250.53	264.07	283.53
SIEMENS	821.75	771.38	796.57	818.18	843.37	864.98
STER	133.05	127.22	130.13	134.42	137.33	141.62
SUNPHARMA	542.10	531.80	536.95	542.45	547.60	553.10
TATAMOTORS	273.95	263.85	268.90	276.20	281.25	288.55
TATAPOWER	118.65	111.68	115.17	117.68	121.17	123.68
TATASTEEL	478.00	460.67	469.33	479.17	487.83	497.67
TCS	1228.75	1201.58	1215.17	1234.58	1248.17	1267.58
WIPRO	448.85	431.95	440.40	446.70	455.15	461.45

Pivot Point: Intra- Day trading tool applying stop loss based on NSE prices.

Pivot Point: This is trigger point for Intra Day buy/sell based on the price range of the previous day based on NSE prices.

R1: Resistance one: 1st Resistance over PP. **R2:** Resistance two: 2nd Resistance over R1.

S1: Support one: 1st support after PP. **S2:** Support two: 2nd support after S1.

As per the tool, the trader should take BUY position just above Pivot Point and keep the stop loss of Pivot Point and the first target would be R1. If R1 is crossed then R2 becomes the next target with the stop loss at R1.

Similarly, if price goes below Pivot Point the trader should SELL and keep the Pivot Point as Stop loss and first target would be S1.

If S1 is crossed then S2 becomes the next target with the stop loss at S1.

Legends: BPP: Book part profits, BFP: Book full profits, AP: Average profits, EMA: Exponential moving averages,

SA: Simple Average, RVS: Revised Stop loss level

KARVY RESEARCH DESK – HNI & RETAIL BROKING

A Kalyan C Reddy	kalyanc@karvy.com	+91-9908333225
J K Jain	jambu@karvy.com	+91-9618087899

Karvy Stock Broking Limited

“Karvy Centre”, Avenue-4, 2nd Floor, Road No: 10, Banjara Hills, Hyderabad – 500 034. India.

Tel: 91-40-23312454; Fax: 91-40-23311968

Disclaimer:

The views represented here are based purely on Technical studies/analysis and can be at odds with our Fundamental views/analysis.

The information and views expressed and presented in this report are prepared by Karvy Stock Broking Limited (Karvy). The information contained herein is based on our analysis and up on sources that we consider reliable. We, however, do not vouch for the accuracy or the completeness thereof. This material is for personal information only and we are not responsible for any loss incurred based upon any action/trade(s) there upon.

The investments discussed or recommended in this report may not be suitable for all investors. Investors must make their own investment decisions based on their specific investment objectives and financial position and using such independent advice, as they believe necessary. While acting upon any information or analysis mentioned in this report, investors may please note that neither Karvy nor any person connected with any associated companies of Karvy accepts any liability arising from the use of this information and views mentioned in this document.

The author, directors and other employees of Karvy and its affiliates may hold long or short positions in the above-mentioned companies from time to time. Every employee of Karvy and its associated companies are required to disclose their individual stock holdings and details of trades, if any, that they undertake. The team rendering corporate analysis and investment recommendations are restricted in purchasing/selling of shares or other securities till such a time this recommendation has either been displayed or has been forwarded to clients of Karvy. All employees are further restricted to place orders only through Karvy Stock Broking Ltd. The report is intended for a restricted audience and we are not soliciting any action based on it. Neither the information nor any opinion expressed herein constitutes an offer or an invitation to make an offer, to buy or sell any securities, or any options, futures nor other derivatives related to such securities.

Karvy Stock Broking Ltd. does and seeks to do business with companies covered in its research reports. As a result, investors should be aware that the firm may have a conflict of interest that could affect the objectivity of this report. Investors should consider this report as only a single factor in making their investment decision.